



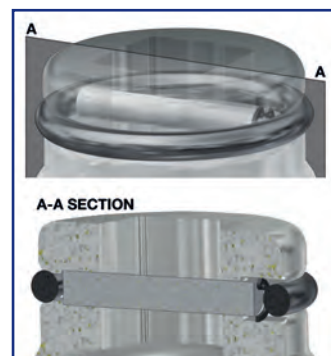
The new Paoli sockets are an unprecedented product and the result of a long and complex engineering research. Continued consultation with many race customers has ensured that the Paoli Sockets' technological development goes hand in hand with the real needs of racing teams in terms of versatility, safety, materials and maintenance.

- Three different materials: titanium, special steel and aeronautical aluminium. The first and the second are suitable for the race application, the third one is suitable for non-intensive use and torque wrench.
- Innovative design, attractive shapes and aesthetically pleasing.
- Accuracy in fitting the socket to the square drive, perfect clearance that allows the socket to be assembled and disassembled just by hand.
- Innovative safety system to insert the pin through the socket/square drive hole. Revolutionary system when assembling the socket by using the circlip and an 'O' ring on the cover. Maximum safety, a fine fitting and a considerably reduced assembly time.
- Insertion of service holes for maintenance of magnets: replacing magnets is quick and easy, with a simple plug-locator.
- Internal 'O' ring retaining nut made from new Paoli Sockets material. The customized resin gives the socket an ideal grip with its high gripping power.
- The Paoli Sockets Service Kit for the maintenance and replacement of worn parts contains everything needed to work on the socket simply and safely. A brief instruction manual indicates the optimum way to carry out operations (E.g. replacement and subsequent refinement of magnets).

Internal 'O' ring retaining nut especially made for Paoli Sockets.

Also available in aeronautical aluminium, suitable for torque wrench applications.

Innovative safety system.



Replacing magnets is quick and easy thanks to rear service holes.

Accuracy in fitting the socket to the wrench (minimal clearance).

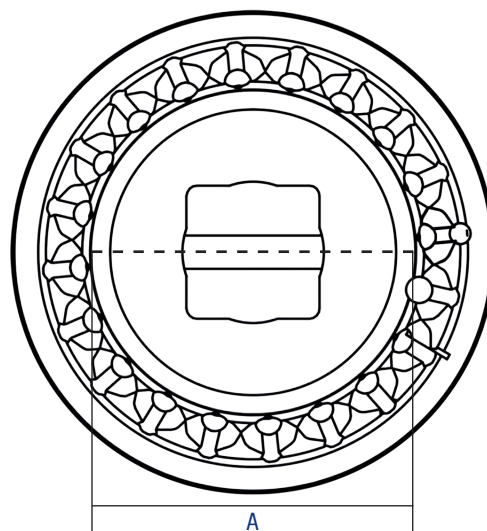
Innovative design, attractive shapes and aesthetically pleasing.





CHOOSE YOUR PAOLI SOCKET

SOCKETS "WITH FINGERS"

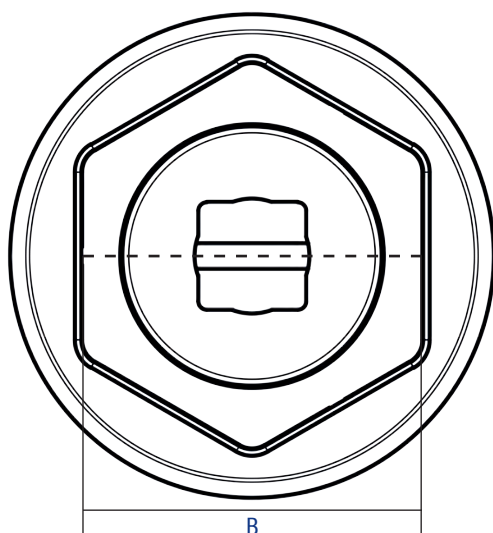


CODE	PAGE
B.28.0031	70
B.28.0040	70
B.28.0046	70
B.28.0063	70
B.28.0052	71
B.28.0049	71

CODE	PAGE
B.28.0033	72
B.28.0041	72
B.28.0029	73
B.28.0038	73
B.28.0030	73
B.28.0039	73

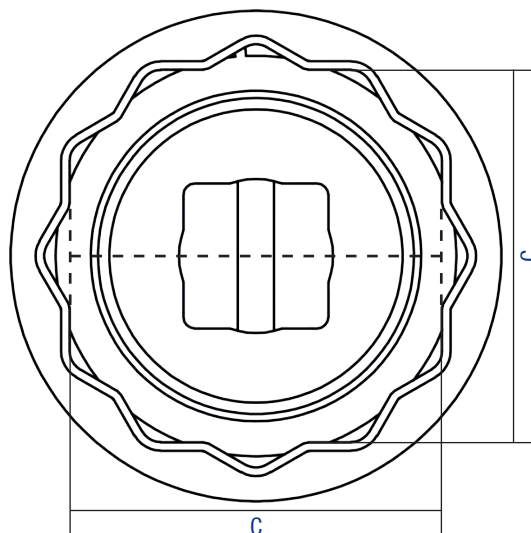
CODE	PAGE
B.28.0032	74
B.28.0042	74
B.28.0058	74
B.28.0051	74
B.28.0050	75
B.28.0059	76

HEXAGONAL SOCKETS



CODE	PAGE
B.28.0028	71
B.28.0037	72
B.28.0077	72
B.28.0064	75

DODECAGONAL SOCKETS



CODE	PAGE	CODE	PAGE
B.28.0016	71	B.28.0034	77
B.28.0015	72	B.28.0035	77
B.28.0062	76	B.28.0067	78
B.28.0061	77		

BEST PRACTICE → PORSCHE CUP, ENDURANCE



NEW PAOLI SOCKET!
ORIGINAL PAOLI DESIGN
FOR SPLINE WHEEL GUNS.
CUTTING EDGE ANVIL-SOCKET
PAOLI FIXING SYSTEM! (Page 15)

**PATENT
PENDING**



PORSCHE 991 RSR

CODE	B.28.0083
SPLINE DRIVE	1" long
MATERIAL	titanium
A	58,5 mm
RETENTION SYSTEM	front fixing screw
TEETH NUMBER	18

BEST PRACTICE → INDYCAR



NEW PAOLI SOCKET!
ORIGINAL PAOLI DESIGN
FOR SPLINE WHEEL GUNS.
CUTTING EDGE ANVIL-SOCKET
PAOLI FIXING SYSTEM! (Page 15)

**PATENT
PENDING**



INDYCAR

CODE	B.28.0080
SPLINE DRIVE	1"
MATERIAL	titanium
A	65,26 mm
RETENTION SYSTEM	front fixing screw
TEETH NUMBER	20

BEST PRACTICE → FERRARI ENDURANCE



NEW PAOLI SOCKET!
ORIGINAL PAOLI DESIGN
FOR SPLINE WHEEL GUNS.
CUTTING EDGE ANVIL-SOCKET
PAOLI FIXING SYSTEM! (Page 15)

**PATENT
PENDING**



F488

CODE	B.28.0082
SPLINE DRIVE	1"
MATERIAL	titanium
A	59 mm
RETENTION SYSTEM	front fixing screw
TEETH NUMBER	24

BEST PRACTICE → LAMBORGHINI ENDURANCE



NEW PAOLI SOCKET!
ORIGINAL PAOLI DESIGN
FOR SPLINE WHEEL GUNS.
CUTTING EDGE ANVIL-SOCKET
PAOLI FIXING SYSTEM! (Page 15)

**PATENT
PENDING**



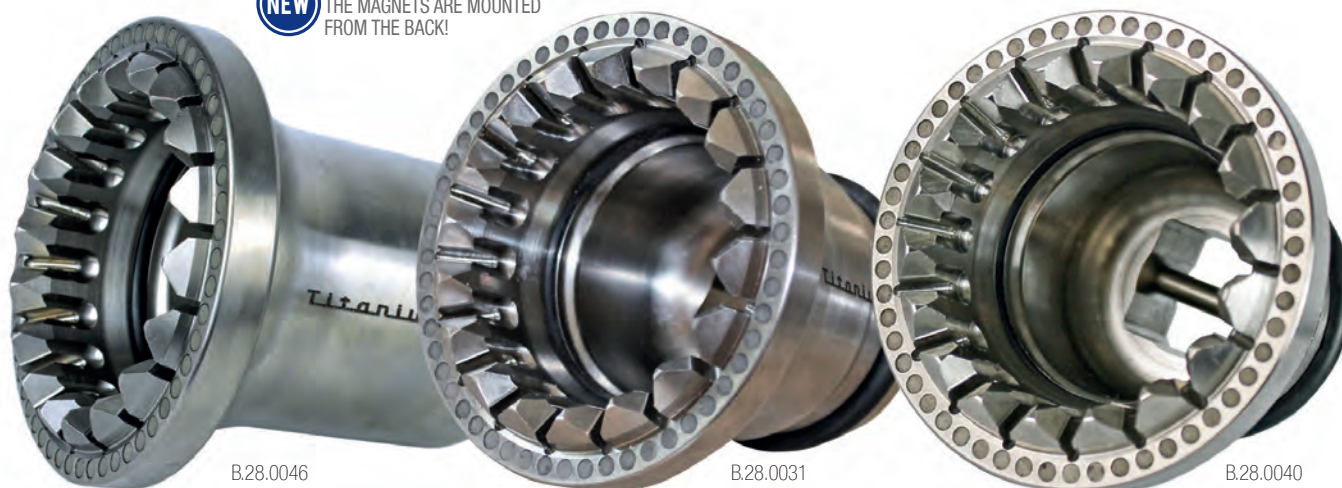
HURACAN GT3

CODE	B.28.0081
SPLINE DRIVE	1"
MATERIAL	steel
A	49,5 mm
RETENTION SYSTEM	front fixing screw
TEETH NUMBER	20

BEST PRACTICE → PORSCHE CUP, ENDURANCE



SAFER ENGINEERING:
THE MAGNETS ARE MOUNTED
FROM THE BACK!



PORSCHE 911 RSR - 997 RSR

CODE	B.28.0031	B.28.0040	B.28.0046
SQUARE DRIVE	1"	1"	1" long
MATERIAL	titanium	aluminium	titanium
A	58,5 mm	58,5 mm	58,5 mm
RETENTION SYSTEM	magnets and o-ring	magnets and o-ring	magnets and o-ring
TEETH NUMBER	18	18	18

PORSCHE 991 RSR

CODE	B.28.0063
SQUARE DRIVE	1" long
MATERIAL	titanium
A	58,5 mm
RETENTION SYSTEM	magnets
TEETH NUMBER	18

BEST PRACTICE → PORSCHE CUP, ENDURANCE



PORSCHE 996/997 CUP

CODE	B.28.0028	B.28.0016
SQUARE DRIVE	3/4"	3/4"
MATERIAL	steel	steel
B	36 mm	
C		32 mm
RETENTION SYSTEM	magnets, balls and springs	n.a.



B.28.0052

PORSCHE 991 CUP

CODE	B.28.0052	B.28.0049
SQUARE DRIVE	1"	1"
MATERIAL	aluminium	titanium
A	65 mm	65 mm
RETENTION SYSTEM	o-ring	o-ring
TEETH NUMBER	15	15

Available on demand



BEST PRACTICE → INDYCAR

NEW SAFER ENGINEERING:
THE MAGNETS ARE MOUNTED
FROM THE BACK!



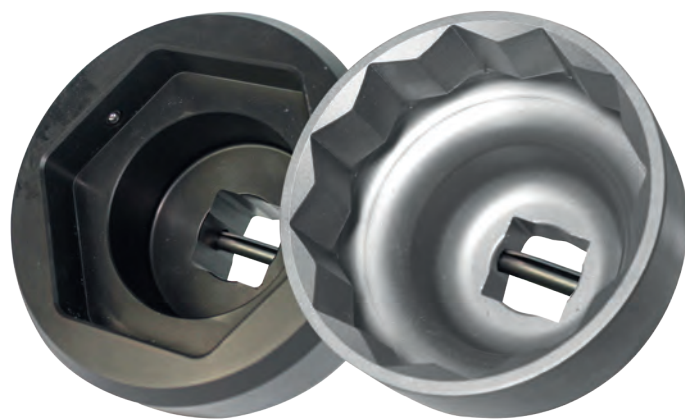
B.28.0033

B.28.0041

INDYCAR

CODE	B.28.0033	B.28.0041
SQUARE DRIVE	1"	1"
MATERIAL	titanium	aluminium
A	65,26 mm	65,26 mm
RETENTION SYSTEM	magnets and o-ring	magnets and o-ring
TEETH NUMBER	20	20

BEST PRACTICE → FERRARI CHALLENGE



B.28.0037

B.28.0015

FERRARI 430 CHALLENGE

CODE	B.28.0037	B.28.0077	B.28.0015
SQUARE DRIVE	1"	3/4"	1"
MATERIAL	aluminium	aluminium	steel
B	80 mm	80 mm	
C			80 mm
RETENTION SYSTEM	balls and springs	balls and springs	n.a.

BEST PRACTICE → FERRARI ENDURANCE

NEW SAFER ENGINEERING:
THE MAGNETS ARE MOUNTED
FROM THE BACK!



B.28.0038

B.28.0029



B.28.0039

B.28.0030

F430

CODE	B.28.0029	B.28.0038
SQUARE DRIVE	1"	1"
MATERIAL	titanium	aluminium
A	68,42 mm	68,42 mm
RETENTION SYSTEM	magnets and o-ring	magnets and o-ring
TEETH NUMBER	24	24

F458 GT2

CODE	B.28.0030	B.28.0039
SQUARE DRIVE	1"	1"
MATERIAL	titanium	aluminium
A	57,9 mm	57,9 mm
RETENTION SYSTEM	magnets and o-ring	magnets and o-ring
TEETH NUMBER	24	24

BEST PRACTICE → FERRARI ENDURANCE

NEW SAFER ENGINEERING:
THE MAGNETS ARE MOUNTED
FROM THE BACK!



B.28.0042

B.28.0032



B.28.0051

B.28.0058

F458 GT3 (14 slots nut)

CODE	B.28.0032	B.28.0042
SQUARE DRIVE	1"	1"
MATERIAL	titanium	aluminium
A	69,18 mm	69,18 mm
RETENTION SYSTEM	magnets and o-ring	magnets and o-ring
TEETH NUMBER	28	28

F488

CODE	B.28.0058	B.28.0051
SQUARE DRIVE	1"	1"
MATERIAL	titanium	aluminium
A	59 mm	59 mm
RETENTION SYSTEM	n.a.	n.a.
TEETH NUMBER	24	24

BEST PRACTICE → LAMBORGHINI SUPER TROFEO



HURACAN SUPER TROFEO

CODE	B.28.0064
SQUARE DRIVE	1"
MATERIAL	aluminium
B	70 mm
RETENTION SYSTEM	magnets

BEST PRACTICE → LAMBORGHINI ENDURANCE

NEW SAFER ENGINEERING:
THE MAGNETS ARE MOUNTED
FROM THE BACK!



HURACAN GT3

CODE	B.28.0050
SQUARE DRIVE	1"
MATERIAL	steel
A	49,5 mm
RETENTION SYSTEM	magnets
TEETH NUMBER	20

BEST PRACTICE → MERCEDES SL3



MERCEDES SL3

CODE	B.28.0059
SQUARE DRIVE	1"
MATERIAL	steel
A	61 mm
RETENTION SYSTEM	pin, circlip and o-ring
TEETH NUMBER	24

BEST PRACTICE → SUPER FORMULA



SUPER FORMULA

CODE	B.28.0062
SQUARE DRIVE	1"
MATERIAL	steel
C	65 mm
RETENTION SYSTEM	harmonic ring

BEST PRACTICE → FORMULA 2



FORMULA 2

CODE	B.28.0061
SQUARE DRIVE	1"
MATERIAL	titanium
C	65 mm
RETENTION SYSTEM	harmonic ring

BEST PRACTICE → GP3 WSR F3



B.28.0035

B.28.0034

GP3 WSR F3

CODE	B.28.0034	B.28.0035
SQUARE DRIVE	1"	3/4"
MATERIAL	steel	steel
C	55 mm	55 mm
RETENTION SYSTEM	balls and springs	balls and springs



BEST PRACTICE → SUPER TC2000



SUPER TC2000

CODE	B.28.0067
SQUARE DRIVE	1"
MATERIAL	steel
C	70 mm
RETENTION SYSTEM	n.a.

PAOLI WHEEL NUTS



COMPATIBLE WITH F488

CODE	VERSION	DESCRIPTION
B.32.0018	LH - aerospace steel	with slots
B.32.0019	RH - aerospace steel	with slots

On demand we are able to produce and supply more wheel nuts for different specific needs.

INSERT ADAPTERS



Reccomended just for garage use.
With this compact insert adapter to a bigger square drive the overall length is reduced to an absolute minimum.
The insert adapter sticks to the socket by means of a magnet.

CODE	WHEEL GUN	SOCKETS
B.29.0001	1/2"	3/4"
B.29.0002	3/4"	1"



SOCKET RINGS & RETAINERS



WARNING!

The socket without the retainer can be dangerous if it gets out during the work!

FOR SOCKETS	PAGE	RETAINERS	RINGS
B.28.0031 B.28.0040	70		
B.28.0046 B.28.0063			
B.28.0028 B.28.0016	71	B.30.01.0014	B.30.02.0004
B.28.0052 B.28.0049			
B.28.0033 B.28.0041	72		
B.28.0037 B.28.0015	72	B.30.01.0009	B.30.02.0005
B.28.0077	72	B.30.03.0052	B.30.02.0005
B.28.0038 B.28.0029	73		
B.28.0030 B.28.0039			
B.28.0032 B.28.0042	74	B.30.01.0014	B.30.02.0004
B.28.0051 B.28.0058			
B.28.0064 B.28.0050	75		
B.28.0059	76		
B.28.0062	76	B.30.01.0014	B.30.02.0008
B.28.0061	77	B.30.01.0014	B.30.02.0004
B.28.0034	77	B.30.01.0014	B.30.02.0008
B.28.0035	77	B.30.01.0001	B.30.02.0003
B.28.0067	78	B.30.01.0014	B.30.02.0004

